

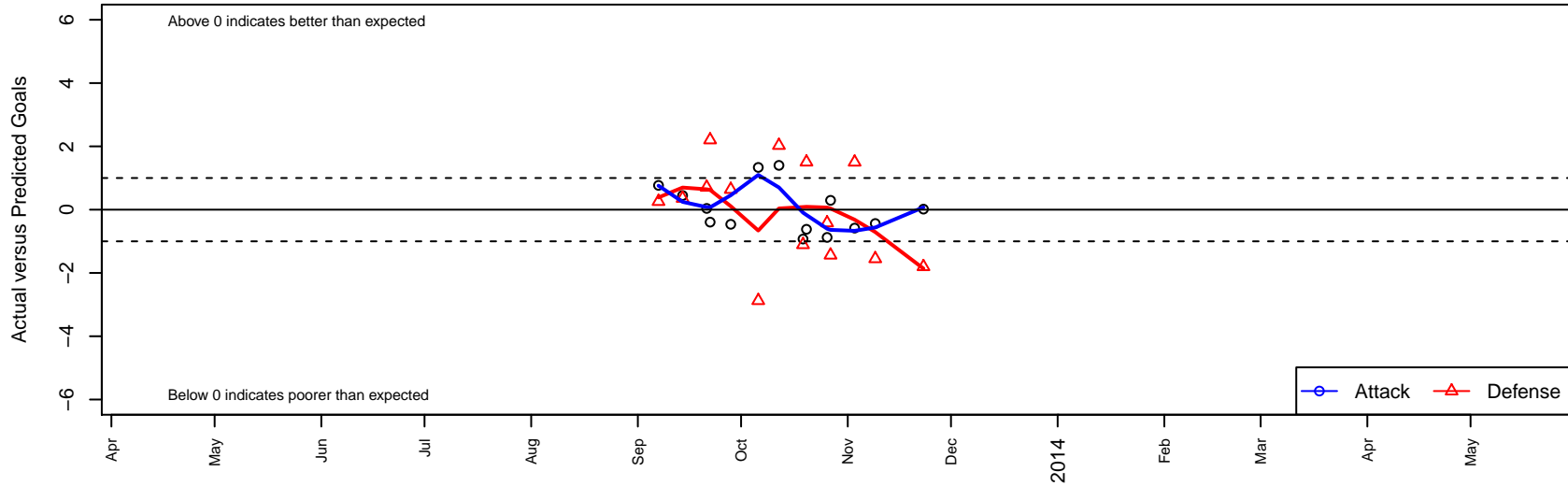
# Roadrunner United FC B00

, CAS  
 B00 total strength=1093  
 attack=2.8 defense=2.72  
 fall league = SCDL FI1 U13  
 alt names used:  
 Roadrunner United FC B00

Venues played:  
 SCDL FI1 U13



**Roadrunner United FC B00**  
 Dots are actual minus expected GF (blue circles) and GA (red triangles).  
 Blue line is smoothed change in attack strength. Red is smoothed change in defense strength.



	<b>date</b>	<b>home</b>		<b>away</b>		<b>venue</b>	<b>pred.home</b>	<b>pred.away</b>
19176	2013-11-23	Roadrunner United FC B00	1	Strikers FC Whittier B00	4	SCDL F11 U13	0.98	2.20
17804	2013-11-09	LA Galaxy South Bay Gold B00	4	Roadrunner United FC B00	0	SCDL F11 U13	2.45	0.44
17280	2013-11-03	Roadrunner United FC B00	0	Santa Barbara SC White B00	2	SCDL F11 U13	0.58	3.50
16258	2013-10-27	Arsenal FC Pre-Academy B00	4	Roadrunner United FC B00	1	SCDL F11 U13	2.56	0.71
15975	2013-10-26	Central California Aztecs B00	3	Roadrunner United FC B00	0	SCDL F11 U13	2.58	0.88
15359	2013-10-20	Downtown SC White B00	1	Roadrunner United FC B00	0	SCDL F11 U13	2.50	0.62
15036	2013-10-19	Roadrunner United FC B00	0	FRAM Premier B00	3	SCDL F11 U13	0.93	1.89
13994	2013-10-12	Roadrunner United FC B00	2	Los Angeles Futbol Academy Red B00	2	SCDL F11 U13	0.60	4.03
13357	2013-10-06	Roadrunner United FC B00	2	Strikers FC South Coast B00	6	SCDL F11 U13	0.66	3.12
12028	2013-09-28	Strikers FC Cerritos B00	3	Roadrunner United FC B00	0	SCDL F11 U13	3.64	0.46
11438	2013-09-22	Real So Cal White B00	0	Roadrunner United FC B00	0	SCDL F11 U13	2.20	0.39
11085	2013-09-21	Roadrunner United FC B00	1	Beach FC B00	1	SCDL F11 U13	0.96	1.71
10113	2013-09-14	CZ Elite B00	1	Roadrunner United FC B00	2	SCDL F11 U13	1.36	1.55
9164	2013-09-07	Roadrunner United FC B00	1	FC Golden State Academy B00	6	SCDL F11 U13	0.23	6.26